



WITH River Deep, Mountain High



AMAZING ADVENTURES

P: +61 2 4782 6109
E: fun@rdmh.com.au
W: www.rdmh.com.au



How to get to the Blue Mountains
The Katoomba precinct of the Central Blue Mountains region is a 2 hour journey by road or rail from Sydney CBD. Board a train from Central Station. If driving, cross Anzac Bridge, follow City West Link, turn right along Parramatta Road and take the M4 Motorway into the Blue Mountains. Alternatively, city pick-ups are available, via advance bookings with our extended 4WD tours.

- Daily departures for two or more
- Gourmet picnic lunch and real bush tucker samples
- Nationally qualified staff
- NSW NPWS licensed - BM1950
- BMCC licensed - NBR004
- Six Foot Track licensed
- \$10 Million public liability insured
- VIP and YHA card, group, family and repeat client incentives
- No hidden fees and charges

Our experienced staff lead:
Abseiling
Canyoning
Mountain Biking
Photo Safaris
Wildlife Tours
Team Building
Bushwalking
Rock climbing
4WD Tours
Camping Trips
School Programs
Six Foot Track Hikes

Adventure and Photographic Company P/L
trading as
River Deep, Mountain High
2/187 Katoomba Street, Katoomba

Blue Mountains: Not just a destination, a real experience!

..a landscape brimming with
precipitous cliffs and hidden chasms,
where waterfalls plunge into an ancient
wilderness.
If you've never stood upon a remote
mountain, looking out over the
wilderness in quiet solitude, the silence
only pierced by distant echoes of
birdsong, then perhaps you're missing
something...
If you've camped deep in the wilds of
the Blue Mountains, strolled among a
mob of wild kangaroos, or sat and
watched the tiny wrens in the under-
growth, then yours will be the contented
smile...
To gaze back up at the waterfall you've
just abseiled down, or the cliff you
descended or climbed, therein lies a
memory cherished forever.

DISCOVER...

AMAZING ADVENTURES



Safari camp

Blue Mountains Safari Camp

Your only permanent and private Safari Camp in the heart of the Blue Mountains. Escarpment views, wildlife, campfire and eco-toilet



Rock art

Aboriginal Art and Culture

See ancient Rock Art and Occupation Sites dating back almost 22,000 year with local guides



Photo workshops

Luxury 4WD Tours, Sunset Safaris, Extended Photo Safaris

Visit remote and amazing locations, join a 4WD night tour, take an extended photo safari into Australia's outback



Wildlife

Australian Wildlife and Wildflowers

See Kangaroos, wombats, platypus, spectacular bird life & unique flora, all in the great outdoors



Trekking

Trekking, Hiking, Wilderness Walks

From half-day guided interpretive walks to full day off-track hikes, overnight escapes and longer supported treks. Avoid the trampled tourist trails



Adventure!

Extraordinary Adventures

Abseiling, Canyoning, Mountain Biking, Rock Climbing and Combination Adventure Packages. Blue Mountains finest adventures await...



Team building

Teambuilding, Corporate Incentives, Schools

Fun, outcomes-based programs, small or large groups, city or country programs for groups of 7 to 700+. Organised, educational and experiential camps for school groups

EXPERIENCE THE RDMH DIFFERENCE

- ! RDMH scheduled tours and safaris operate with minimum of 2 passengers and a maximum of 10 to 12 (20 by arrangement). Charter groups of 100+ also catered for.
- ! Our Blue Mountains Safari Camp is on private land, with twin share tents, composting toilet, open fire, insect proof and covered dining area (for up to 20 guests). A dedicated camp host oversees all hospitality requirements, including special dietary needs.
- ! RDMH staff all have a passion for the Blue Mountains environment, each with special interests (such as bird watching, photography, native foods, wildlife or wildflowers), ensuring memorable interaction with clients.
- ! RDMH has been operating tours throughout the Blue Mountains since 1995.
- ! Tour itineraries take into consideration local weather, client interests and an emphasis on the natural environment. Our tours are relaxed, taking in the peace and solitude each location provides. Adventures can be hard and fast, relishing the excitement of the moment.
- ! RDMH has an exclusive abseiling and rock-climbing site in south Katoomba with views to the world famous Three Sisters, Echo Point, Katoomba Falls and the Jamison Valley. RDMH has the capacity to provide Adventure programs for 100+ at any time.
- ! RDMH networks with all Blue Mountains accommodation venues and is able to offer a local door-to-door service.
- ! All meals include Australian Native Seasonings and Condiments.



Open brochure out for details of our amazing adventures...

AMAZING ADVENTURES

We supply an amazing array of activities including bushwalking (hiking), abseiling (rappelling), canyoning, rock climbing, mountain biking, photo safaris and four wheel drive escapes. These can be offered as stand-alone services or in combination e.g. abseiling and canyoning. Programs range from half days to full days, with overnight and multi-day guided hikes also available.

www.rdmh.com.au

+61 2 4782 6109

Abseiling

Experience the thrill of abseiling down sheer cliffs. It's easy, unbelievably good fun, and almost anyone can try it. Our private site in Katoomba has Three Sisters views and is the only site protected from the savage westerly winds that frequent the upper mountains. All roping anchors are tested annually and comply with Australian Standards, ensuring complete safety.

Half Day – Drops 5 to 30 metres in just 3 hours. Morning or afternoon sessions

4 Hour Course – Add an extra hour to the half-day program and double the fun. Zip down a 60 metre cliff.

Abseil Expeditions – Just imagine, learn the technique in the morning, then take a 5 pitch expedition down the side of the mountain in the afternoon! Ride the railway back up to finish. Or, do the horizontal challenge through Boar's Head crevasse and climb around the ledges of sheer cliffs, with extensive views over the valley.



Canyoning

With more than 300 known canyons in the Blue Mountains, this is the canyon capital of the world! Canyoning involves slipping into a wetsuit for some wet & wild fun – scrambling, swimming and jumping your way through the canyon... even abseiling down waterfalls. RDMH offers trips in over 25 canyons, so there are trips for all experience levels, all year round.

Beginners: Abseil & Canyon tour - Learn to abseil in Katoomba, with stunning views across the valley. From beginners block to sheer rock, you will dangle 30 metres over the edge.

After a gourmet picnic lunch, it's down to the canyon for some wet & wild action. Jump into amazing deep pools, see stunning scenery, and experience the thrill of abseiling down the waterfall!

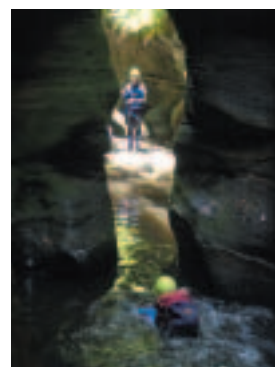
Full Day Canyons: Sheep Dip / Rocky Creek – no abseils, lots of water jumps, beautiful scenery; **Fortress Creek** – one abseil, longer walk, stunning valley views; **Serendipity** – 4 abseils, water jumps, swims. A great day out;

Wollangambe – no abseils, scramble over boulders, swim, float on air mattresses;

Tigersnake – winter canyon, dry. **Experience required: Bowens Creek** – 2 abseils, down-climbs, swims; **Butterbox** – with 7 abseils, getting there is half the fun;

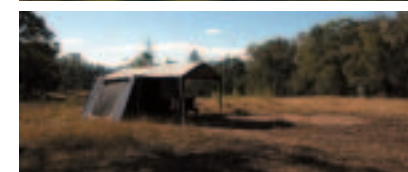
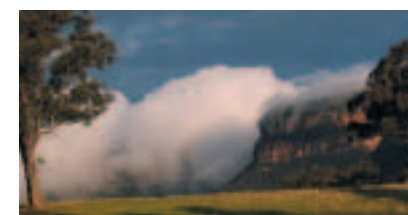
Claustral – a full-on day, 3 abseils, down-climbs, swims, scrambles;

Hole in the Wall – 3 abseils, glowworm cave, good diversity. Long entry and exit tracks.



Safari Camp

The Blue Mountains Safari Camp, in the heart of the Megalong Valley, provides fantastic views across both cliffs and wilderness. Featuring quality camping, great food and abundant wildlife, you will enjoy panoramic views across the valley and cliffline, as wild kangaroos graze nearby. As the golden cliffs blush scarlet in the sun's last rays, relax by the campfire in the heart of the Blue Mountains. This is a photographer's paradise, where moments of unsurpassed beauty are delivered in a passing parade.



Bushwalking

RDMH principally leads walks on the lesser used tracks and trails. We have a range of exciting half-day hikes and full-day walks. We are the only Blue Mountains operator offering overnight hikes into the Jamison and Grose Valleys. We are the licenced operator for the iconic Six Foot Track, a great three-day hike from Katoomba to Jenolan Caves. And yes, you are fit enough for most of our amazing hikes.

Half Day Walks: Grand Canyon – half day, follow the stream through rainforest;

Lockley's Pylon – half day, 360° views, wonderful scenery;

Blue Mountain – visit the real mountain, explore unique swamp country, half day;

Foy's Pass – let this ancient half day trail lead you through narrow rock clefts;

Triple-By-Pass – 3 hidden passes, lunch and fun scrambles over 2/3rds of a day.

Full Day Hikes: Jamison Traverse – quiet, peaceful, remote;

Grose Valley Traverse – A longer day, through the Blue Gum Forest;

Bruce's Track – a hidden gem, overgrown, well worth the challenge;

Pagoda Track – detour to the Glowworm Tunnel, climb the pagoda rock formations.

Two Day Rambles: Mt Solitary – Jamison Valley views, rainforest and cliffs;

Kedumba Valley – wildlife in abundance, peace and quiet;

Wolgan Way – an escape into mining history, with landform diversity.

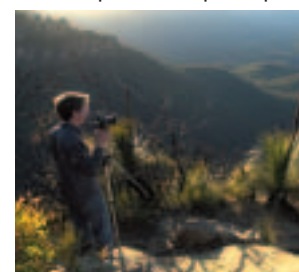
Three Day Treks: Jamison Circuit – from the cliffs to Mt Solitary, Kedumba Valley and beyond; **Six Foot Track** – supported and guided from Katoomba to Jenolan Caves, you only carry a daypack.



Photographic Safaris

RDMH offers both single day and weekend Photography Workshops and Safaris. These outdoor instructional workshops enable participants to develop their skills and gain the most from their film or digital camera,

while taking in amazing Blue Mountains locations. RDMH also offers a range of extended Photographic Safaris to outback NSW, Queensland, Central Australia and the Northern Territory Top End.



Mountain Biking

RDMH has both quality bikes and a range of rides to suit all. Explore the fire trails on a fun ride, take in the scenery.

Baltzer lookout – half day, undulating trail, awesome Grose Valley and Hanging Rock views.

Narrow Neck Plateau – 2/3rd day, a few technical challenges, superb Jamison Valley and wilderness views.

Oaks Fire Trail – Follow the ridges on this day trip from Woodford to Glenbrook. Some easy sections.

Newnes Plateau – another through-ride, including a visit to the famous Glowworm Tunnel, finishing in the Wolgan Valley.

Multi-Day rides – Only RDMH offers fully supported and guided rides through the region, including the Old Rail Pass (2 days), Hill End to Mudgee Wineries (3 days), Kanangra to Mittagong (3 days).



4WD Escapes

Experience a luxury 4WD tour through the Blue Mountains. Remote locations, look for kangaroos in the wild, take in a Sunset Safari with a dinner in the bush. Why not consider an extended tour, exploring the furthest reaches of the Blue Mountains, in conjunction with an overnight stay at our private Safari Camp, or 3 to 5 days travelling through to Mudgee's wineries and the Warrungbungs National Park. Escape today!

Half day sneak peek – capture the essence of the Blue Mountains on a short escape to remote lookouts, rock outcrops, rainforest and waterfalls

Day Tours – Discover some of the hidden secrets of the Blue Mountains – remote lookouts, Aboriginal sites, canyons, caves and waterfalls.

Or, escape the city on a one or two day round trip through the peace and solitude of the Blue Mountains. Your private guided tour will whisk you out of Sydney and into the quiet corners of the Blue Mountains. Relax over lunch beside cool mountain streams. Stand on the edge of cliffs towering over the wilderness and gaze into forests far below.

Sunset Safari – Step up to remote lookouts, descend to the valley and look for wild kangaroos, watch the sunset over a BBQ dinner, find a cave of glowworms under a star-studded sky. A night to remember in the Blue Mountains.



Rock climbing

Starting with climbs suitable for complete beginners, you will soon progress in height and grade of climb. For those already experienced, multi-pitch climbing is also available on classic routes.



Visit the website www.rdmh.com.au for more details

Visit the website www.rdmh.com.au for more details